

INSTALLATION & OPERATION MANUAL

CMS

Before trying to connect or operate this product, please read this manual completely

The CMS (Central Management System)

This section provides instructions for installing and using the **Central Management System** (CMS) which is included with the device. The programs can be operated by a selected PC equipped with the following requirements.

System Requirements

- Intel Pentium 1.5 GHz processor or above (2.8 GHz or higher recommended).
- 1GB RAM at least (2GB or higher recommended).
- Windows XP or above.
- 16 MB VGA card capable of 24-bit true color display.
- 10GB free hard-disk space for software installation.
- 10/100 Base-TX network for LAN operation.
- The Microsoft Internet Explorer 6 (or higher recommended).
- In the multi-channel recording mode, the HD data transfer rates must be 66MB or above (100MB or higher recommended).

1.1 Introduction to the CMS

The **CMS** allows you to access many units of the device from a remote desktop or a laptop in a TCP/IP networking environment. It can perform the following functions.

- **Views live images in a smooth sequential flow from an IP camera/ DVR/ Video Server.**
- **Stores, searches, and reviews recorded video from a PC or an SD card quickly.**
- **Changes manual record, event record, and schedule record settings easily.**

Before you view images from a desktop, you need to have your device networked by obtaining a 10/100 base-TX Ethernet data cable (Standard RJ-45) to connect the device to your LAN/WAN. Now enter the main menu to set the IP address.

1.2 Install the CMS in your PC

Install the CMS from the supported CD-R.

1. Exit all applications currently running in the selected PC.
2. Insert the supported CD in the CD-ROM drive. The program will execute the installation automatically. Follow the on-screen instructions to proceed with the rest of the installation procedure as they appear.
3. After the installation is complete, pop up the **START** menu from your computer, and point to **Programs / CCTV CMS / CCTV CMS** to open up the program selection page as shown below. Click on the **CCTV CMS** tag to start the **CMS** program.

Install the CMS for the ZIP file.

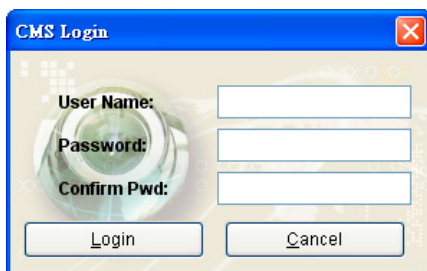
1. Save the ZIP file to your PC and extract the file to a designated directory.
2. Open the extracted folder. The folder contains 1 file.
3. Click the **setup** icon to execute the installation and then follow the on-screen instructions to proceed with the rest of the installation procedure.
4. After the installation is complete, click the **START** menu from your computer, and point to **Programs / CCTV CMS** to start the **CMS** program.

NOTE: Please make sure the TCP/IP communication software has been properly set and configured in your computer.

NOTE: Due to the Windows® hard-coding limitations, the simultaneous connection of the CMS system will be restricted. It will influence simultaneously live play by multi-profiles, playback and recording in a selected camera. To increase the HTTP Connection limit to 40 (the maximum allowed), please refer to <http://support.microsoft.com/default.aspx?scid=kb;en-us;Q282402>.

1.3 Login the CMS

Once the **CMS** is executed, a Login prompter will appear. You must enter the default user name: **admin**, and the password: **9999** in the respective spaces (and confirm the password again the first time you log in). Click the “**OK**” button and enter the console page of the **CMS**: both the user name and password must be entered correctly. Click the “**Cancel**” button and exit the login of the **CMS**.

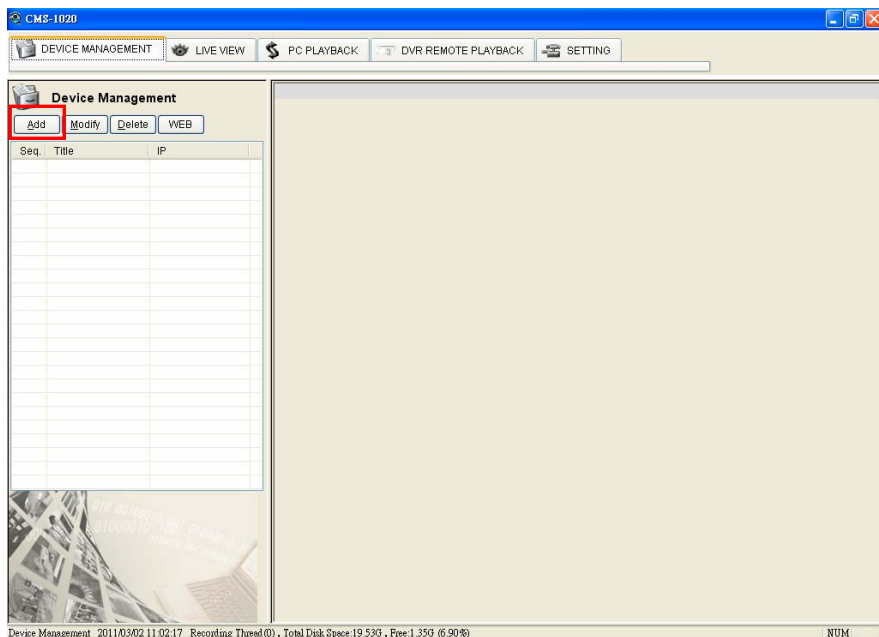



The image shows a 'CMS Login' dialog box with a blue title bar and a close button (X) in the top right corner. The background of the dialog features a stylized image of a camera lens. There are three input fields: 'User Name:', 'Password:', and 'Confirm Pwd:'. Below these fields are two buttons: 'Login' and 'Cancel'.

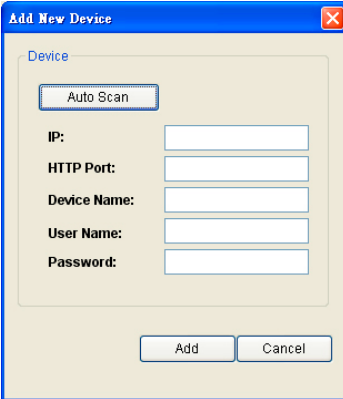
View the video from a remote PC

Follow the instructions below to use the **CMS** to browse the video from a remote location.

Upon entering the **CMS**, a connection box will appear as follows.



1. Press the  (Add Device) button on the **Device Management** page.
2. Add a device from the Add Device page.




The image shows a Windows-style dialog box titled "Add New Device" with a blue header bar and a red close button in the top right corner. The main area has a light beige background. At the top, the word "Device" is written in blue. Below it is a button labeled "Auto Scan". Underneath are five labeled text input fields: "IP:", "HTTP Port:", "Device Name:", "User Name:", and "Password:". At the bottom of the dialog are two buttons: "Add" and "Cancel".

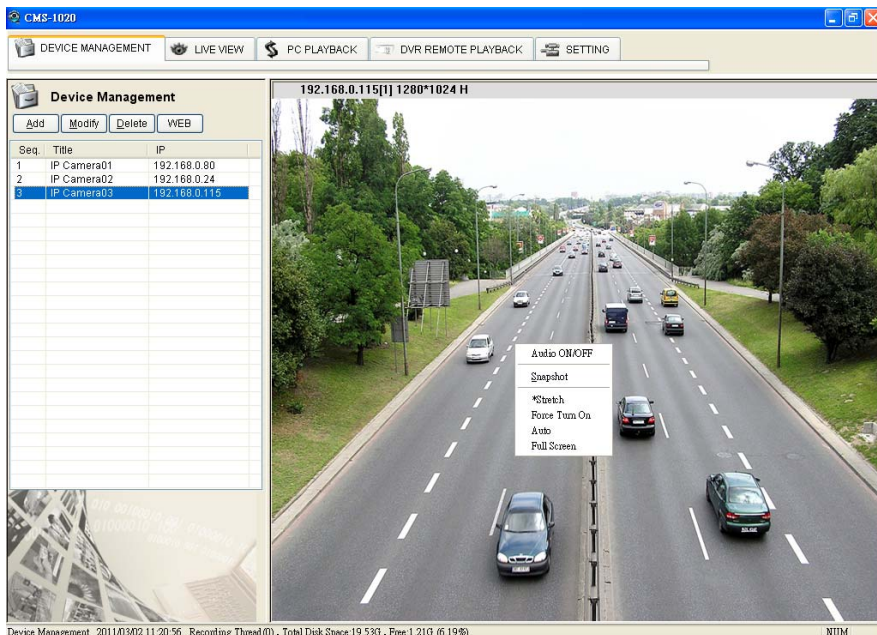
3. **(1)** Click the **Auto Scan** button at the bottom of the "Add Device" page to discover the connection of the device in the LAN. Instantly the "Device Auto Scan" page will appear. Click the device of your choice and click **"Add"** at the bottom of the page to access the "Add Device" page again.
 - (2)** This page provides the IP Address and the HTTP Port. After typing the Device Title, Username, Password and selecting the share device function or the permissions function, please click the **"Add "** button to establish the connection between the device and the computer.
4. Click the device title to begin viewing images from the device list.





NOTE: To add more connections or units, please repeat the above instructions.

1.4 Operation

1.4.1 Device Management


Once the connection has been established, click the  button to enter the Device Management window (see the sample screen below.) On the left side of the window is the connected device that has been arranged when you established the connection.

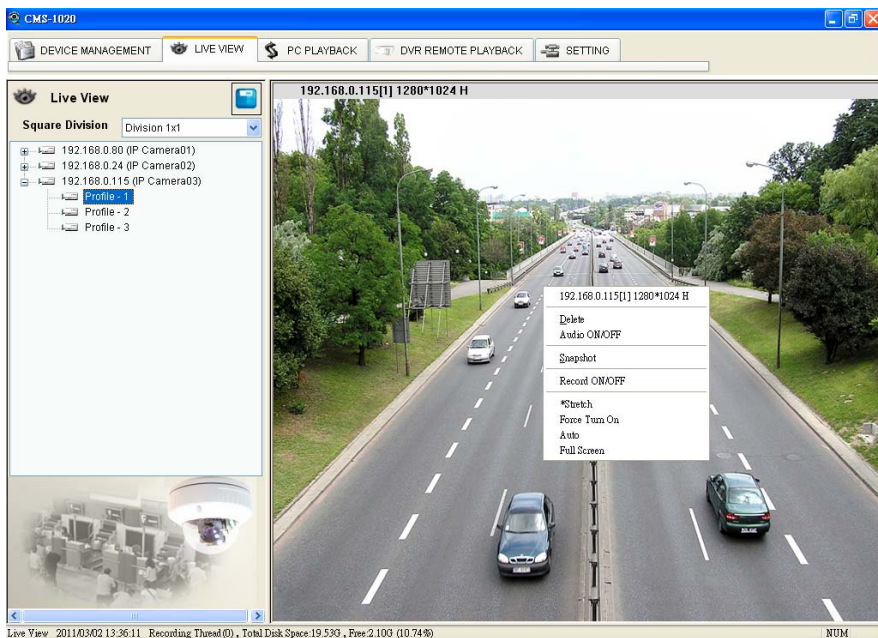



	Add device: Add a new device.
	Modify device: Modify the added device. Please select a device, then click this button to edit the device.
	Delete device: Delete the added device.
	Device Setting: For additional setting of the device, please select the device title on the left side and click the setting button to enter the setting pages of the device. The method of operation is the same as the Microsoft Internet Explorer setting pages (please refer to section 6.1 for more details).
List of devices: You can click the title of the device and use the icons above the list to change the device settings.	
Display area: Click the title of the device, and you will see the live image in this area.	

Pop-menu: You can use the mouse to move to each channel. Click the right key of the mouse to show a window. You can select " Audio On/Off ", " Snapshot " or " Size ".	
Audio On/Off	Click to activate the audio function. Click again to deactivate the function.
Snapshot	Save single-channel image: Click to save a JPG image of the chosen channel. You can set the backup file path and the file name.
Size	Stretch: Click "Stretch", and the image will be stretched to fit the whole viewable area. Force Turn On: Click "Force Turn On", and the image will be shown in the original image ratio the camera has got and aim at the center of the display area. Auto: Click "Auto", and the image will be stretched to fit the whole viewable area of the viewer in ratio. Full Screen: Click "Full Screen", and the image will be stretched to the whole monitor display area.

1.4.2 Live View

Once the connection has been established, click the  **LIVE VIEW** button to enter the Live View window (see the sample screen below.)



Division	Select the division mode of the live view area.
	Click to show the information of the selected device above the live view display area.
Live view area	Select the preferred device from the list and drag and drop it in the live view area.
Pop-menu: You can use the mouse to move to each channel. Click the right key of the mouse to show a window. You can select " Audio On/Off ", " Snapshot " or " Size ".	
Remove	Click the "Delete" item in the pop-up menu and the image will be disconnected.
Audio On/Off	Click to activate the audio function. Click again to deactivate the function.
Snapshot	Save single-channel image: Click to save a JPG image of the chosen channel. You can set the backup file path and the file name.
Record On/Off	Click the item to run the function.

Size	<p>Stretch: Click "Stretch", and the image will be stretched to fit the whole viewable area.</p> <p>Force Turn On: Click "Force Turn On", and the image will be shown in the original image ratio the camera has got and aim at the center of the display area.</p> <p>Auto: Click "Auto", and the image will be stretched to fit the whole viewable area of the viewer in ratio.</p> <p>Full Screen: Click "Full Screen", and the image will be stretched to the whole monitor display area.</p>
-------------	---

Add a camera video onto the Live View area:

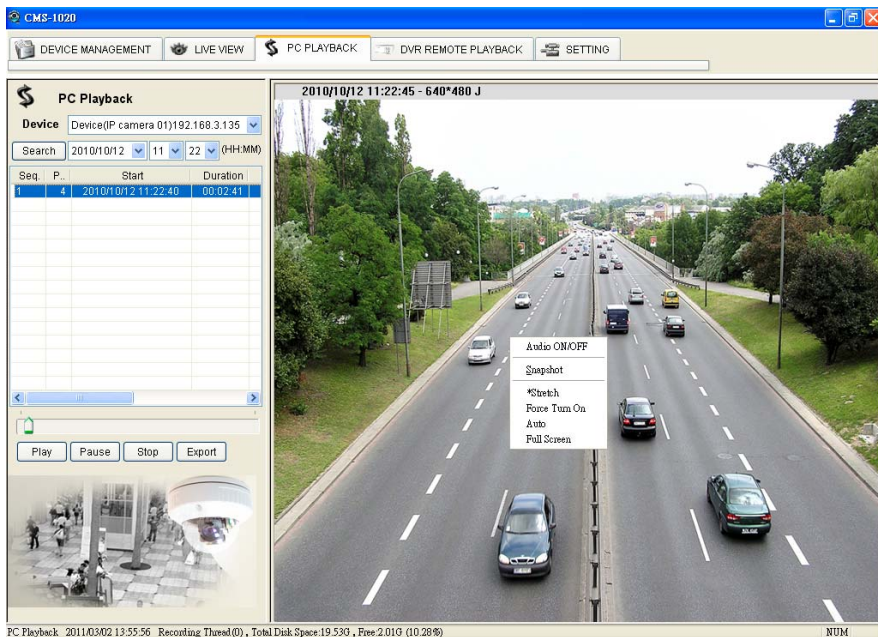
1. Click the title of the camera that was connected.
2. Hold down the right mouse button and drag onto the droppable Live View area. The video from the camera will be displayed.
3. In the Live View area, if you want to change/delete the videos of cameras or use the "Audio On/Off" or "Snapshot" function, you can right click again on the live view area, then click left to select.


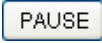
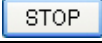
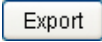
Delete a camera video from the Live View area:

1. Select the video of the camera which you want to delete.
2. Right click on the live view area, then click left to select "Delete".

1.4.3 PC Playback


Press the  **PC PLAYBACK** button to enter the **PC Playback** page.

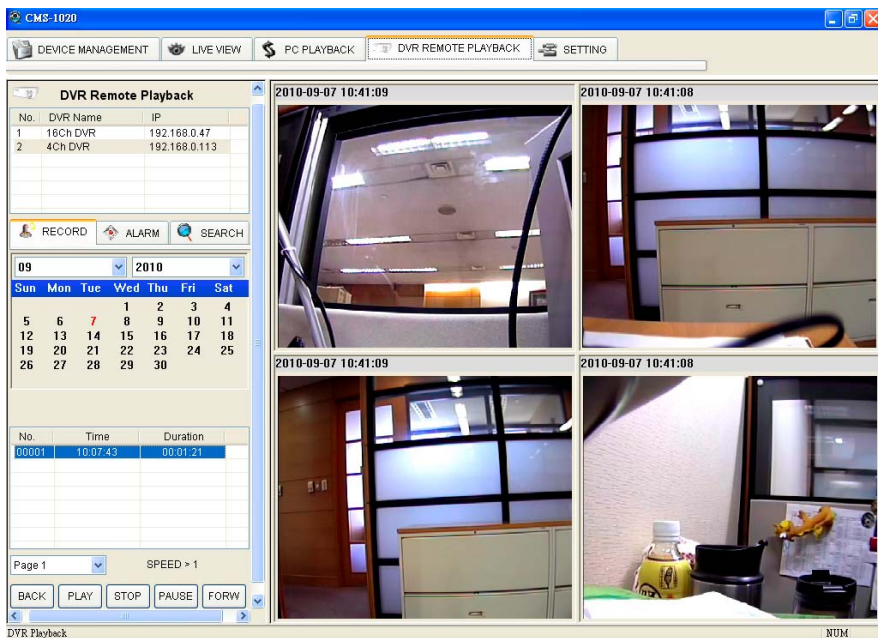


Device List	Select the device which you want to play back its recorded videos.
Play List	Click the file name of the recording list and the program will play back the file and show the details of the recorded file. Duration: The recording time.
Scrollbar	Drag the thumb of the Scrollbar with the mouse to move to a particular location.
	Click to play the selected video file.
	Click to pause.
	Click to stop. Hide the function buttons.
	<ol style="list-style-type: none"> Click to save an AVI video file of the chosen channel. Use the slider to set the Start/ End time of the recorded file then click the "Set" button respectively. You can set the backup file path and the file name by clicking the "AVI" button. Then click "Save".
Pop-menu: You can use the mouse to move to each channel. Click the right key of the mouse to show a window. You can select " Audio On/Off ", " Snapshot " or " Size ".	
Audio On/Off	Click to activate the audio function. Click again to deactivate the function.

Snapshot	Click to save a JPG image of the chosen channel. You can set the backup file path and the file name.
Size	<p>Stretch: Click "Stretch", and the image will be stretched to fit the whole viewable area.</p> <p>Force Turn On: Click "Force Turn On", and the image will be shown in the original image ratio the camera has got and aim at the center of the display area.</p> <p>Auto: Click "Auto", and the image will be stretched to fit the whole viewable area of the viewer in ratio.</p> <p>Full Screen: Click "Full Screen", and the image will be stretched to the whole monitor display area.</p>

1.4.4 DVR Remote Playback

Press the  button to enter the DVR Remote Playback page.



List of devices:

You can click the title of the device and use the buttons below the list to search a recorded video.

RECORD

09

2010

Sun

Mon

Tue

Wed

Thu

Fri

Sat

5

6

7

8

9

10

11

12

13

14

15

16

17

18

19

20

21

22

23

24

25

26

27

28

29

30

No.

Time

Duration

00001

10:07:43

00:01:21

Page 1

RECORD

09

2010

Sun

Mon

Tue

Wed

Thu

Fri

Sat

5

6

7

8

9

10

11

12

13

14

15

16

17

18

19

20

21

22

23

24

25

26

27

28

29

30

No.

Time

Duration

00001

10:07:43

00:01:21

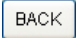



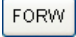

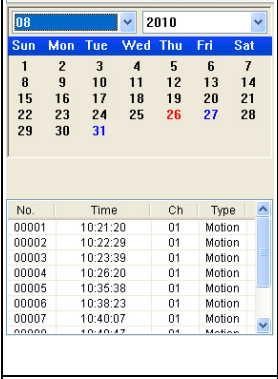


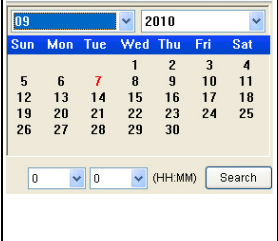
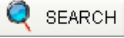
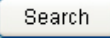
Page up/ Page down

Click on the button and the Record List panel will appear on the left side of the Live View page.

This allows you to search a recorded video stored in the HDD of the device. Select the Month/ Date/ Year you wish to search.

NO.: An item number in the alarm list.
Time: The record starting time.
Duration: The record's continuance in time.

Enables you to scroll up and down the list.

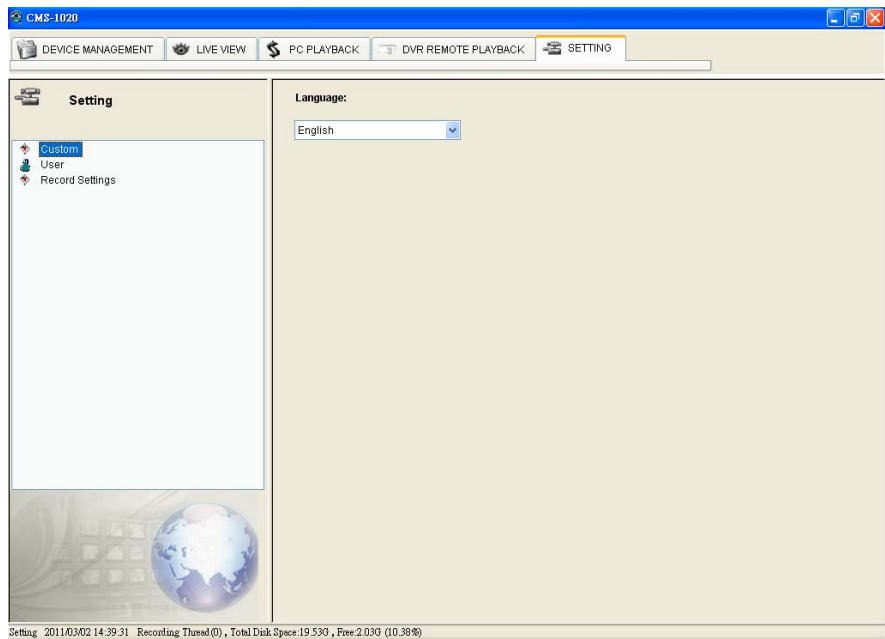
	BACK (REV)	Click to play a recorded video in the reverse direction at speeds which are faster than the recorded speed.
	PLAY	Click to play a recorded video from the PLAY LIST.
	STOP	Click to stop playing back the recorded video.
	PAUSE	Press the PAUSE button to halt the selected image.
	FWD	Click to play a recorded video in the forward direction at speeds which are faster than the recorded speed.
 		<p>Click on the button and the Alarm control panel will appear on the left side of the Live View page.</p> <p>This allows you to search a recorded video stored in the HDD of the device. Select the Month/ Date/ Year you wish to search. The dates marked in blue color indicate there are alarm record videos on those days.</p> <p>NO.: An item number in the alarm list. Time: The alarm occurring time. Ch: The channel where an alarm occurred. Type: The alarm type.</p> <p>To review a recorded video, simply select an entry from the list.</p>
 		<p>Click on the button, and the Time Search panel will appear on the left side of the Live View page.</p> <p>This allows you to search a recorded video stored in the HDD of the device. Select the Month/ Date/ Year you wish to search.</p> <p>Enter the "HOUR: MINUTE:" you wish to search and click the  button to proceed.</p>

1.4.5 Setting

Press the  **SETTING** button to enter the Setting page.

(1) Custom

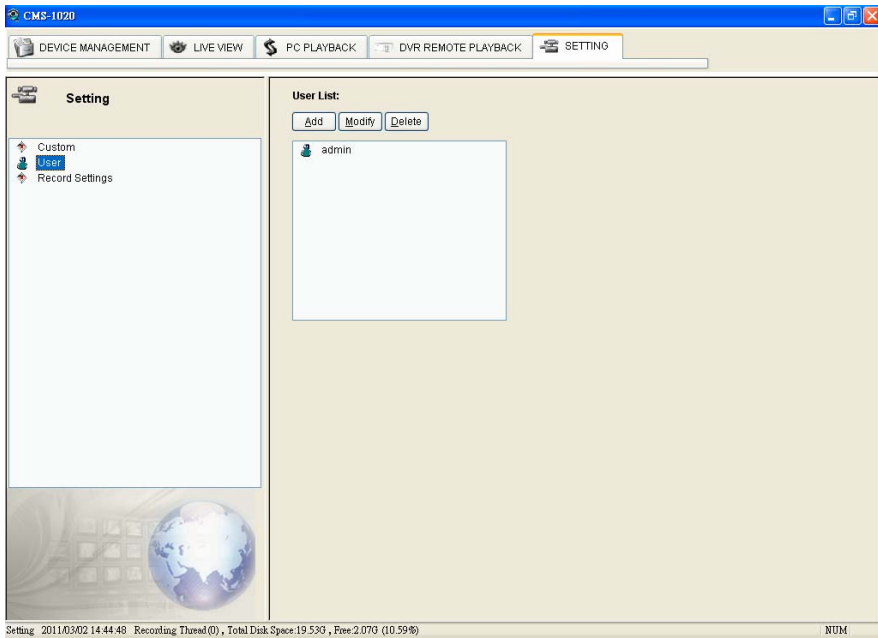
Select the Custom to enter the setting page.



Select the language from the drop-down list.

(2) User

Select the User to enter the setting page.



Add User:

1. Click the "Add" button to bring out the Add User dialog.
2. Enter the Username, Password and Confirm Password.
3. Select the user's group.
4. Now press "Add".

Modify User:

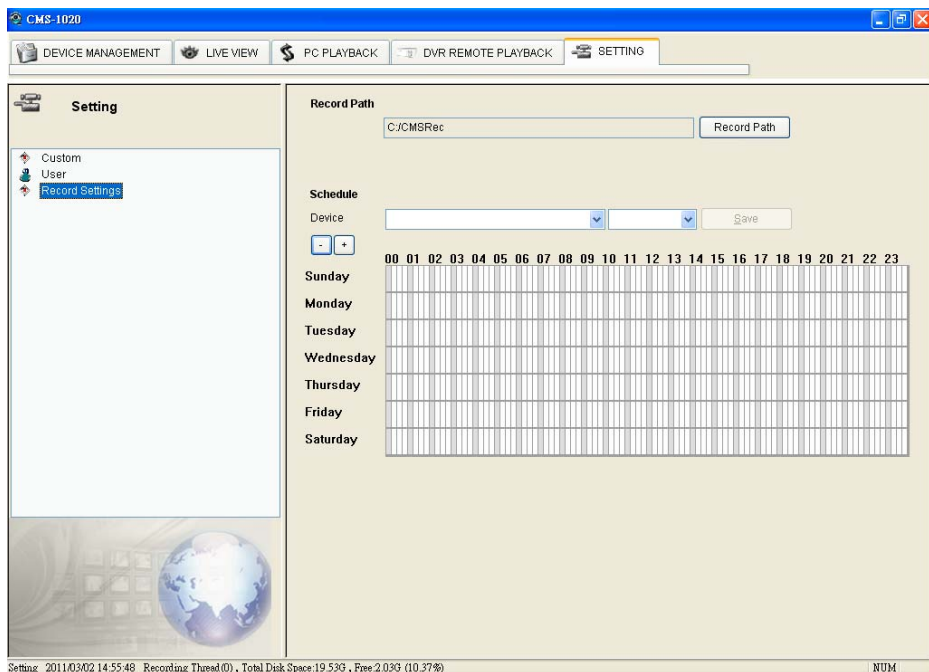
1. Click the "Modify" button to bring out the Modify User dialog.
2. Enter the Password and Confirm Password.
3. Select the user's group.
4. Now press "Modify".

Delete User:

1. Select the user you want to delete.
2. Press "Delete" then click "Yes".

(3) Record Settings

Select the Record Settings to enter the setting page.



Record Path	Press <input type="button" value="Record Path"/> to select the storage path of the recording files.
Record Schedule	<p>Set the record schedule:</p> <ol style="list-style-type: none"> (1) Select the device from the drop-down list. (2) Select the Profile ID (camera) or the Channel (DVR) which is connecting. (3) Click <input type="button" value="-"/> <input type="button" value="+"/> to reduce or enlarge of the schedule form. (4) Every grid of the schedule stands for 15 minutes. The gray grid means the first 15 minutes of each hour. (5) Drag the left mouse key to set the schedule. (6) Drag the right mouse key to cancel the schedule. (7) Press <input type="button" value="Save"/> to save the schedule.